

Newtongrange Local Place Plan 2023



Newtongrange Community Council

Contents:

Executive Summary	3
Vison and Core Values	
Map of Newtongrange	
Context and Baseline Information	5
Purpose and Scope	
Approach	
Area Context	
Scottish Index of Multiple Deprivation (SIMD)	
Planning and Policy Contact	
Evidence and Engagement	8
Engagement Activities	
Limitations to the engagement process	
Proposals	11
Influence and Sense of Control	
Facilities and Services	
Care and Maintenance	
Traffic and Parking	
Work and Local Economy	
Public Transport	
Streets and Spaces	
Housing and Community	
Feeling Safe	
Moving Around	
Play and Recreation	
Social Interaction	
Identity and Belonging	
Natural Space	
Appendices	26
Timetable	
Pre-submission Notice	

EXECUTIVE SUMMARY

The Scottish Government has introduced Local Place Plans (LPPs) as a way for communities to help achieve change in their local area. The tool helps communities to think about how to make their 'place' better, agree priorities, and work with others to make change happen. The plan will focus on outlining proposals for land development and identify land and buildings that are considered to be of particular significance to the local area.

Newtongrange Community Council aim to use the evidence gathered through the community engagement process to produce a community-led plan. This document serves to present the findings and set priorities.

Vision and Core Values

Our Vision and Core Values capture the priorities of Newtongrange residents which have been identified through the engagement process –

A shared vision for our community -

- Newtongrange will have a responsive relationship with Midlothian Council and other service providers. This will help to produce an excellent range of services and facilities to cater for all ages and sectors in our community.
- Newtongrange seeks to enhance the village's heritage, ensuring well-maintained public spaces, clean surroundings, efficient infrastructure, and robust support systems. The collective efforts of its residents enrich the quality of life for all, fostering a sense of belonging and fulfilment within a sustainable, caring, and flourishing community

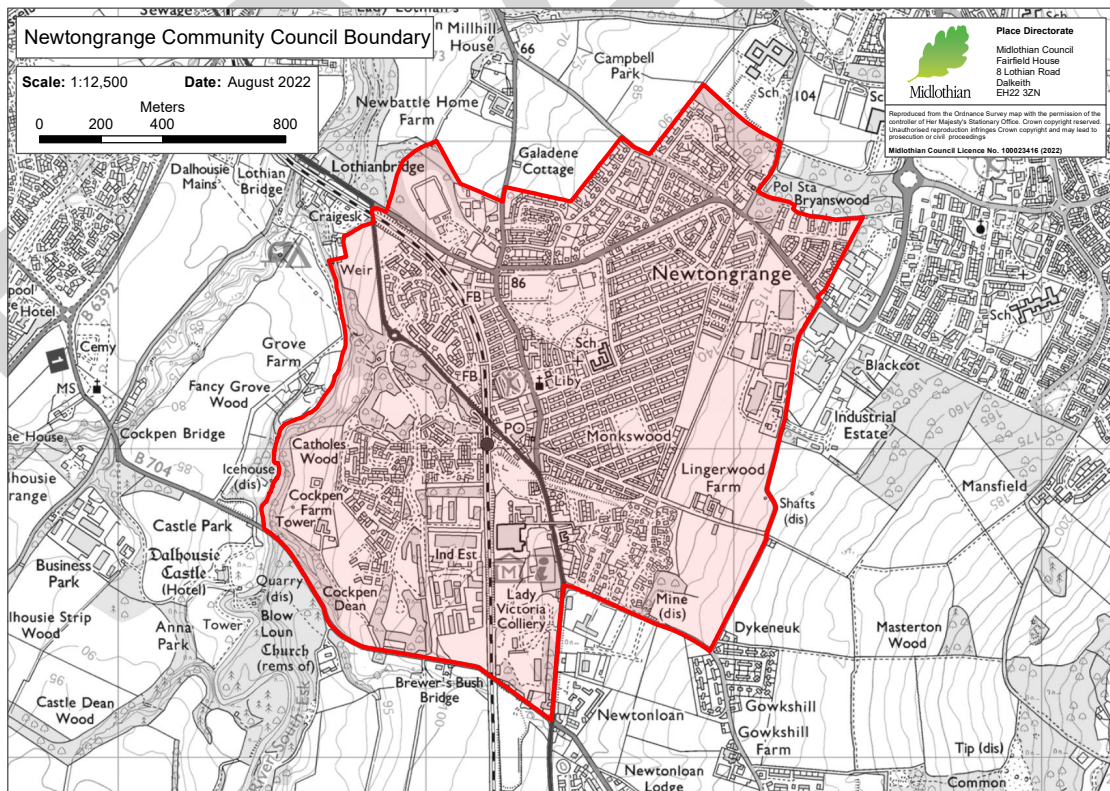
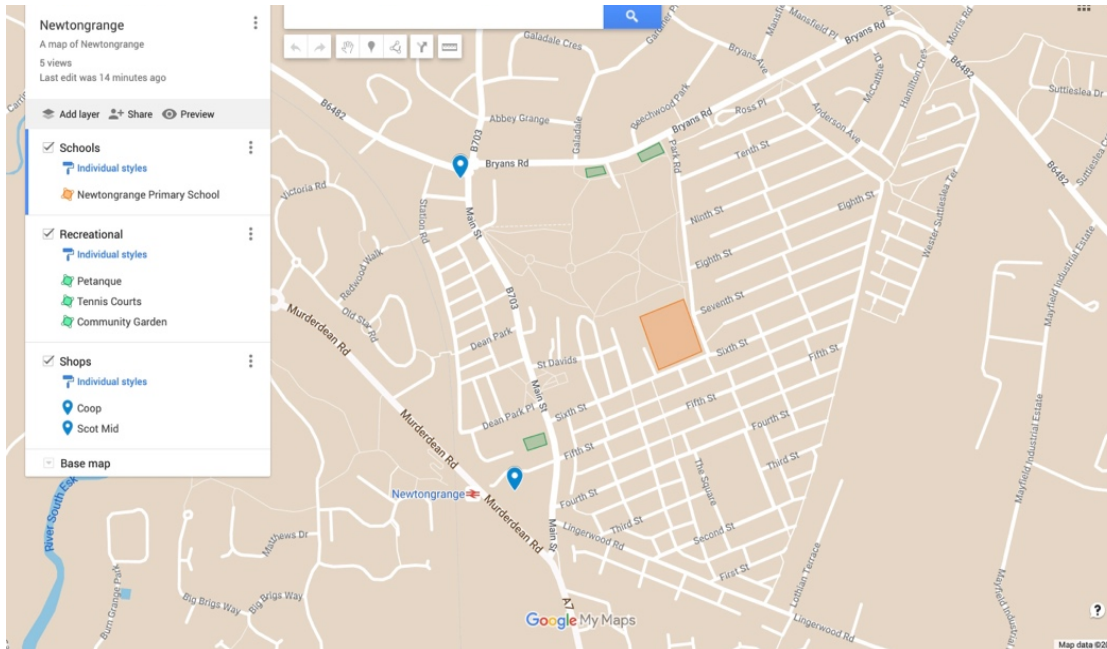
Core values -

- **Community-Centric:** We prioritise the well-being and cohesion of our community above all else, fostering connections, support networks, and a sense of belonging for every resident.
- **Pride in Cleanliness and Tranquillity:** We take immense pride in maintaining a serene, tidy, and peaceful environment, reflecting our respect for the village's aesthetics and contributing to its tranquillity.
- **Forward-thinking and Visionary:** We embrace innovation, progress, and adaptability, striving for a vision that combines the best of tradition with an eye towards the future, ensuring the village's continued growth and improvement.
- **Nurturing and Supportive:** We cultivate a culture of care, support, and encouragement within our community, nurturing the potential of our residents and fostering a sense of collective responsibility for the well-being of all.
- **Thriving and Collaborative:** We believe in the power of collective efforts and collaboration, working together to create an environment where opportunities flourish, and the community thrives holistically.

These core values serve as guiding principles, steering the actions, decisions, and aspirations of the community, ensuring a harmonious, progressive, and inclusive village where everyone contributes to its success and well-being.

Maps of Newtongrange

<https://www.google.com/maps/d/u/0/edit?mid=1O25wLfsGcZjYcljhUuPZSU-h55wcMDA&usp=sharing>



CONTEXT / BASELINE INFORMATION

Purpose and Scope

The Newtongrange Community Council has been responsible for developing the 2023 Local Place Plan. The Community Council, set up by statute by Midlothian Council, is run by local residents to act on behalf of the area.

The purpose of the Local Place Plan is to outline a comprehensive strategy which reflects the collective aspirations, needs, and priorities of the Newtongrange community. This plan serves as a guiding document which articulates the vision for the area's development and improvement over a defined period.

Scope of the Local Place Plan:

1. **Community Engagement:** The plan aims to involve and engage the local community extensively. It seeks to gather insights, ideas, and feedback from residents and stakeholders to ensure the plan aligns with the community's desires and concerns.
2. **Identifying Priorities:** It identifies and prioritises key areas of focus based on the needs and preferences of the community. This may include infrastructure development, environmental conservation, social welfare, economic growth, cultural enhancement, and other relevant aspects.
3. **Strategic Planning:** The plan outlines a strategic roadmap with specific objectives, goals, and actions to address the identified priorities. It includes actionable steps to achieve the desired outcomes.
4. **Collaboration with Authorities:** It establishes a framework for collaboration between Newtongrange Community Council and Midlothian Council. This collaboration ensures that the plan aligns with wider local government strategies and policies.
5. **Resource Allocation:** The plan may involve discussions regarding resource allocation, including funding, grants, and other resources necessary to implement proposed initiatives or projects within the community.
6. **Monitoring and Evaluation:** It includes mechanisms for monitoring progress and evaluating the effectiveness of the plan's implementation. Regular assessments ensure accountability and allow for adjustments to be made as needed.

Overall, the Local Place Plan by Newtongrange Community Council is a strategic document designed to influence how land is developed, empower the community and guide the sustainable development and well-being of the Newtongrange area in collaboration with statutory authorities and the active involvement of local residents. Through this work we are now able to monitor progress with a view to achieving the objectives laid out in the plan.

We would like to thank Newtongrange Library, Village Voices, St Anne's Housing Team, The Dean Tavern, Newtongrange Primary School, Newtongrange Coop, What's on in Newtongrange and the Newtongrange Development Trust for helping to collect responses and develop the plan.

Approach

The approach followed by the Newtongrange Community Council in developing the Local Place Plan involved several key steps:

1. **Review of Previous Reports:** The initial phase involved a comprehensive review of previous reports and documents related to the community's development. This step aimed to understand historical issues, concerns, and priorities previously raised by the community, providing a foundation for future proposals.
2. **Timetabling Key Actions:** Setting clear timelines and deadlines for key actions ensured a structured and organized approach to the planning process. This helped in establishing a framework for the development of the Local Place Plan and ensured progress within specified timeframes.
3. **Utilisation of the Place Standard Tool:** The Community Council employed the Place Standard Tool to gather current views and opinions of the community. This tool offers a framework for evaluating a place across different dimensions such as housing, transportation, social interaction, and more, providing a comprehensive understanding of the community's strengths and areas for improvement.
4. **Varied Engagement Methods:** Recognising the diversity within the community, the Council used various engagement methods. Paper copies of surveys were distributed to organizations and groups working closely with residents who preferred this traditional method. A more concise 'wish list' approach was adopted for those frequenting places like the Library and Coop, allowing for a simpler yet effective way of gathering input. The survey was also available online and a link was shared via social media as well as via email distribution lists.
5. **Data-Informed Proposals:** The insights gathered through these different engagement methods were collated and analysed. The data obtained from the Place Standard Tool and wish lists were used to inform the proposals outlined in the Local Place Plan. This data-driven approach ensured that the plan was rooted in the actual needs, preferences, and priorities of the Newtongrange community.

Overall, this inclusive approach, utilising a mix of research, structured timelines, varied engagement methods, and data analysis, enabled the Newtongrange Community Council to create a Local Place Plan that reflects the collective voice and aspirations of the community.

Area context

Newtongrange, nestled in central Midlothian, holds a rich historical legacy rooted in its mining heritage, while steadily evolving to embrace a diverse and dynamic community. Here's an overview (information is supported by –

(<https://statistics.gov.scot/atlas/resource?uri=http%3A%2F%2Fstatistics.gov.scot%2Fid%2Fstatistical-geography%2FS02002070>):

Geographical Setting and Connectivity:

- Situated in central Midlothian, Newtongrange is well-connected to the wider region through the A7, linking it to both Midlothian and Edinburgh.

- The presence of key facilities like the library, community learning centre, leisure centre, and the Scottish National Mining Museum enriches the community's offerings and cultural significance.

Historical Significance and Conservation Area:

- Newtongrange's heritage is encapsulated within the Newtongrange Conservation Area, encompassing notable landmarks like the Lady Victoria Colliery (a category A listed building), Monkwood, First Street to Fifth Street, and The Square.
- The presence of terraced houses with distinctive vennels contributes to the historic charm that characterizes this village.

Green Spaces and Recreational Areas:

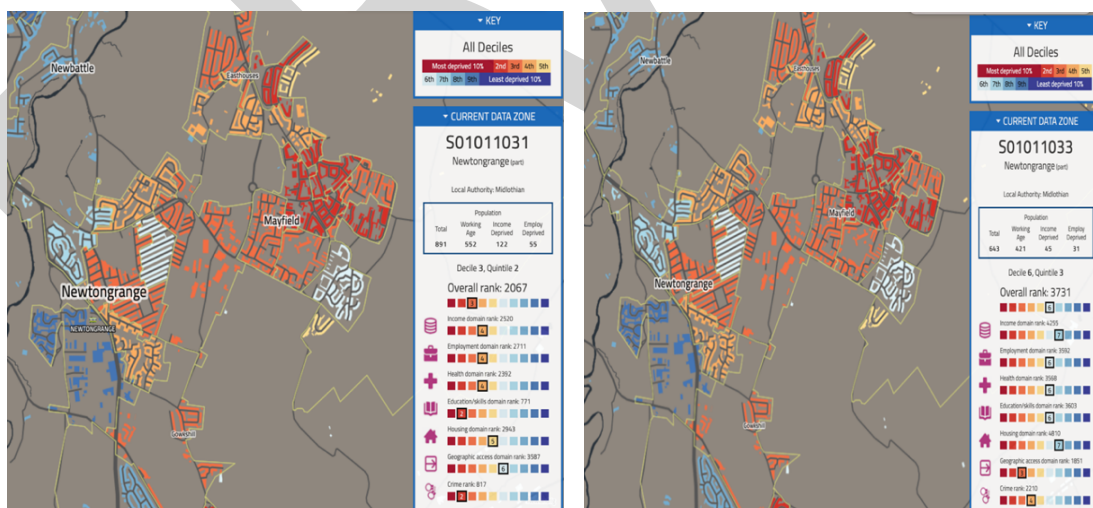
- The Welfare Park and The Square serve as vital green spaces within Newtongrange, offering recreational opportunities and areas for community gatherings and leisure activities.

Demographic Profile and Population Trends:

- As of the 2011 Census, Newtongrange had a population of 5,431, accounting for around 6.52% of Midlothian's total population.
- Notably, Newtongrange had a higher proportion of working-age individuals compared to the Midlothian average, with a lower representation of individuals over 65 years old.
- Anticipated housing developments suggest a further increase in population, indicating potential growth and demographic shifts within the community.

Newtongrange has a vibrant blend of history, community facilities, natural spaces, and evolving demographics underscores its significance as a dynamic and evolving village within the fabric of Midlothian, poised for continued growth and cultural enrichment.

Scottish Index of Multiple Deprivation



SIMD is the Scottish Government's standard approach to identify areas of multiple deprivation in Scotland. It can help improve understanding about the outcomes and circumstances of people living in the most deprived areas in Scotland. It can also allow effective targeting of policies and funding where the aim is to wholly or partly tackle or take account of area concentrations of multiple deprivation.

SIMD looks at the extent to which an area is deprived across seven domains: income, employment, education, health, access to services, crime and housing. Parts of Newtongrange were most deprived in education and crime and less deprived in housing.

(<https://simd.scot/#/simd2020/BTTTT/14/-3.0672/55.8644/>)

Planning policy context

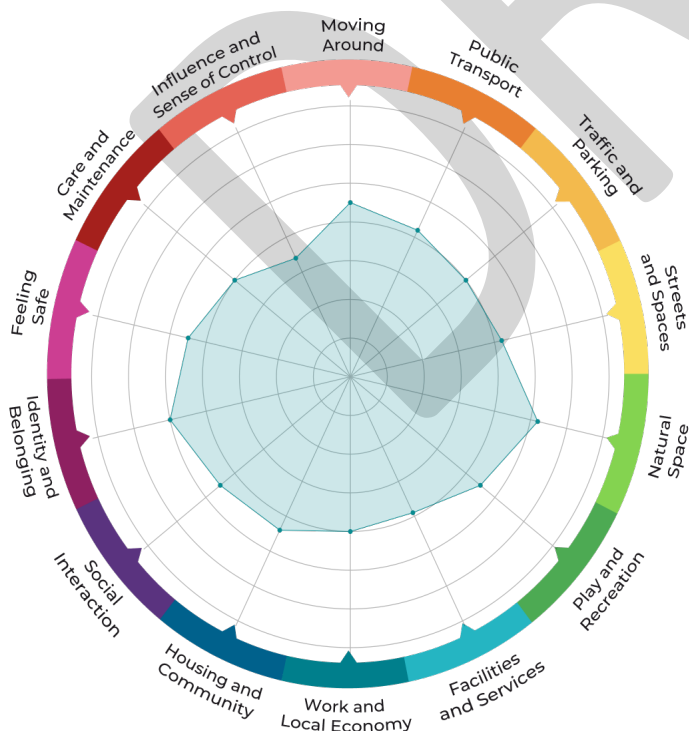
To support the LPP we looked at a number of key national, local and community planning policies and plans, affecting the Local Place Plan area -

- [National Planning Framework 4](#) (NPF4, adopted 13 February 2023); and
- [Midlothian Local Development Plan](#) (MLDP, adopted 07 November 2017).
- [Newtongrange Community Action Plan](#) (2017-2022)
- [Local Outcomes Improvement Plan](#) (The Single Midlothian Plan)
- [20 Minute Neighbourhoods](#)

EVIDENCE / ENGAGEMENT

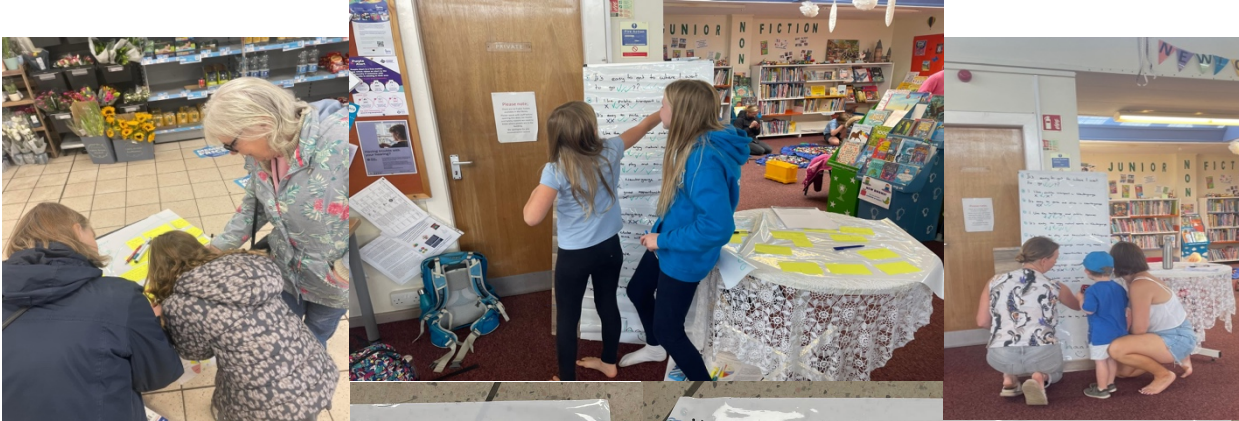
Engagement

Previous results from engagement sessions which took place as part of the *Newtongrange Community Action Plan 2017-2022* and *Newtongrange Resilience Volunteers Report* were reviewed. We then conducted further engagement sessions in Newtongrange Library, the Coop and, additionally, with community members who attend the Village Voices history group, St Anne’s Housing and Dean Tavern. In total 204 people completed the paper and online survey with an additional 38 individuals engaging via the library and Coop sessions totalling 242 participants.



Theme (Results from paper and online survey)	Data Set 1 = low 7 = high
Influence and Sense of Control	3.4
Facilities and Services	3.9
Care and Maintenance	4
Traffic and Parking	4
Work and Local Economy	4
Public Transport	4.2
Streets and Spaces	4.2
Housing and Community	4.4
Feeling Safe	4.5
Moving Around	4.5
Play and Recreation	4.5
Social Interaction	4.5
Identity and Belonging	5
Natural Space	5.2

Engagement Sessions in Newtowngrange Library and Coop



1 It's easy to get to where I want to go ✓✓✓✓ ✓✓✓✓ (7) 😊
 2 I like public transport in Newtowngrange X ✓✓ X? ✓✓✓✓ (5) 😊 (1) 😊
 3 It's easy to park and drive in Newtowngrange XX ✓✓ X? ✓✓ (3) 😊 (3) 😊
 4 I like the buildings and public spaces ✓✓✓✓? ✓✓✓✓ (9) 😊
 5 It's easy to enjoy natural space in Newtowngrange ✓✓✓✓✓✓✓✓✓✓ (11) 😊
 6 It's easy to play and socialise in Newtowngrange ✓✓✓✓✓✓✓✓✓✓ 100% 100% (12) 😊
 7 Services meet my needs X X
 8 There are clubs and groups that let me spend time with people X ✓✓✓✓✓✓✓✓ (4) 😊 (2) 😊
 9 I feel safe ✓✓✓✓✓✓✓✓✓✓ 100% (9) 😊
 10 Newtowngrange is well looked after ✓✓✓✓✓✓ X ✓✓ (8) 😊 (1) 😊
 11 I am listened to by the community X ✓✓✓✓✓✓✓✓✓✓ (9) 😊 (1) 😊

Homes in Newtowngrange meet the needs of the community. X X ✓✓ X ✓ (3) 😊 (3) 😊
 There are clubs and groups that let me spend time with people X ✓✓✓✓✓✓✓✓ (4) 😊 (2) 😊
 I feel safe ✓✓✓✓✓✓✓✓✓✓ 100% (9) 😊
 Newtowngrange is well looked after ✓✓✓✓✓✓ X ✓✓ (8) 😊 (1) 😊
 I am listened to by the community X ✓✓✓✓✓✓✓✓✓✓ (9) 😊 (1) 😊

Wishes for Newtowngrange?...

- like Mayfield - Old building club - with cafe
- Community Hub
- Community Space
- keep the leisure centre
- Community at the Beacon
- IT suit, group of staff play, multi purpose football/tennis, cricket
- Multi-use space
- The Steading at Rostwell
- Trains direct to Haymarket + onwards
- school refurbished (playground)
- More Community Space (inside) to play - soft play
- Toilets
- Better football pitches
- Community hub
- Coffee shop
- Chair shop
- Bus Stop bringing
- Swimming
- Doctors
- better monkey bars
- Attitude & well maintained Open School playground (approximate Newtowngrange City school)
- Direct public transport to Dalkeith Centre & Braemar (via St James)
- Reliable well stocked pharmacy
- Huge TV - Cinema clubs
- Inside Pantry X2
- Swimming pool
- Swimming
- Swimming 14
- Symnastic rings
- Keep the leisure centre - stretch + tone
- the Community Garden to be open more days of the week. There to be like groups that you can go to for more help/run by - Elliott's etc
- Keep a quality pharmacy
- Swimming pool
- Places to read outside
- Community Centre
- Coffee Mornings
- Backs on seats in the park

Limitations to the engagement process

It's understandable that the community's reluctance stems from past experiences where surveys or community engagement initiatives did not yield tangible outcomes. To address this challenge, the Newtongrange Community Council considered alternative methods of gathering input beyond surveys, such as community workshops, focus groups, and interactive online posts. The aim was to make engagement more inclusive and effective. It was important to emphasise that community contributions are crucial in defining the future of the community. This collaborative approach can help rebuild trust and ultimately lead to a more representative and impactful plan for the community's future.

Planning implications

In regard to National Planning Framework (NPF4, 2023-2045), the Newtongrange Local Place Plan seeks to respond positively to its key principles. NPF describes spatial principles, to which this LPP addresses through the following;

- Just Transition – the move to net zero is addressed through the community's desire to see safer cycling routes, enhanced pedestrian access along key routes, safer road crossing, the enhancement of facilities at the station and the safeguarding of services within the village, so as reduce travel requirements.
- Conserving & Recycling Assets – this LPP identifies many current buildings we wish to see conserved and enhanced. In particular the opportunity to redevelop the 'pool site' at the centre of the village. Additionally, we've identified key vacant sites or derelict buildings that could be brought back into use. It is also noted that two derelict and under used buildings within Welfare Park may be recycled and brought back into use.
- Local Living – this LPP seeks to protect all current space within and around the periphery of the village. It remains important to the community that the village continues to be read as a separate village and not as a continuous string of development along the A7 / Midlothian hillside. The LPP also states that services within the village at present should not be reduced, whilst a focus on Welfare Park enhancements will offer great health and wellbeing benefits.
- Compact Urban Growth – as above, the village has expanded significantly. Green belt land should now be safeguarded and protected to prevent the village's close walking access to green space around the periphery disappearing. Flood risk from surface water is a significant issue raised by the community and is further described in the document.
- Rebalanced Development – available land for housing has been identified in the LPP, the community have noted the requirement for affordable housing. Opportunities are available for this, in lieu of large housing developments across green space / farmland.
- Rural Revitalisation – the LPP recognises that all development should be sustainable. Critical to the community is maintaining and enhancing public transport links to Edinburgh and the creation of safer walking & cycle routes to the city / Dalkeith and Gorebridge.
- Beyond NPF4, this LPP also addresses the policy allocation with MLDP 2017. Community consultation has highlighted that further major housing developments should not be undertaken without significant upgrades to water / wastewater / roads infrastructure. Broadly it is recognised that the population movement from Edinburgh towards Midlothian has squeezed green space to a critical point and risks Newtongrange's legibility as a distinct village.

PROPOSALS

We will now use the data and the opinions collected to work through the 14 themes of the Place Standard Tool, starting with the theme that scored the lowest. Recommendations will be suggested and we will draw on policy to support our proposals. A full Action Plan can be found in the appendices of this document – this is a working document and will be updated as necessary.

Influence and Sense of Control

From the analysis of recent data this theme was the lowest scoring topic 3.4/7 and this is a topic which has previously been noted within the [Newtongrange Community Action Plan 2017-2022](#)

Understanding that clearer and more open communication with Midlothian Council staff is a priority for Newtongrange residents. It's essential to address this in a manner that resonates with their needs. Here are some suggested actions the Newtongrange Community Council could consider:

Facilitate Direct Communication Channels:

- Advocate for and establish direct channels of communication between Newtongrange residents and Midlothian Council staff. This could include regular meetings, forums, or dedicated contact points where residents can engage directly with council representatives.

Enhance Transparency:

- Encourage the council to provide clearer and more transparent information regarding decision-making processes, policies, and actions that directly affect Newtongrange. This transparency can help residents understand the rationale behind decisions and feel more engaged in the process.

Prioritise Actionable Outcomes:

- Stress the importance of outcomes from community consultations by highlighting specific instances where resident input has directly influenced decisions or projects. Emphasize the need for tangible actions resulting from consultations, ensuring that the council gives due weight to the feedback received.

Advocate for Feedback Implementation:

- Ensure that Midlothian Council communicates how resident input from consultations has been considered and integrated into decisions or actions. Encourage the council to provide follow-up reports or updates on the outcomes achieved based on community feedback.

Regular Updates and Engagement Opportunities:

- Encourage the council to provide regular updates to the Newtongrange community on ongoing initiatives, projects, or decisions that affect the area. This could be through newsletters, public meetings, or online platforms, to foster a continuous flow of information.

Collaborative Workshops or Forums:

- Organise joint workshops or forums where council staff and Newtongrange residents can meet to discuss specific issues, projects or concerns. This direct interaction can foster mutual understanding and effective communication.

Within the [Development Plan Scheme for Midlothian 2023](#) we note the emphasis on engagement and have been encouraged by the support of the Midlothian Planning Team through the LPP

process. We also see engagement mentioned within [NPF4 – A Fairer and Inclusive Planning System](#). However, by advocating for the above measures, Newtongrange Community Council can work towards establishing a more robust and responsive communication framework between residents and Midlothian Council. This can lead to more meaningful engagement, improved decision-making, and better outcomes that align with the priorities and aspirations of Newtongrange residents.

Facilities and Services

From the recent data this theme scored 3.9/7 and so we can interpret that Newtongrange community see this as an area for development. Certainly, conducting a review of facilities and services in Newtongrange, with a focus on a community hub, library, and healthcare services, is crucial for meeting the evolving needs of the residents. It would be of benefit to see –

Community Consultation:

- Engage with residents to gather feedback on existing facilities and services.
- Understand community preferences and collect suggestions for new services or enhancements.

Assessment of Existing Facilities:

- Conduct a comprehensive assessment of the current community hub, library, and healthcare services.
- Evaluate usage patterns, accessibility, infrastructure condition, technology integration, and overall satisfaction levels.

Identify Gaps and Needs:

- Analyse the feedback collected from residents to identify gaps in services and facilities. Determine specific needs such as extended operating hours, additional amenities, updated resources, or new programmes.

Benchmarking and Best Practices:

- Research and benchmark against similar communities or best practices in other regions and identify successful models or innovations in community hubs, libraries, and healthcare services which could be adapted to suit Newtongrange.

Collaboration with Stakeholders:

- Engage with local authorities, healthcare providers, educational institutions, and community organisations to collaborate on potential improvements or new initiatives.
- Explore partnerships to enhance service delivery, share resources, or introduce new programmes.

Feasibility Study and Resource Assessment:

- Conduct a feasibility study to assess the practicality and viability of proposed changes or new facilities.
- Evaluate financial implications, resource allocation, and potential funding sources for improvements or new developments.

Develop a Comprehensive Plan:

- Based on findings, create a comprehensive plan outlining recommendations and proposed actions and prioritise initiatives based on urgency, community impact, and feasibility.

Continual Community Engagement:

- Establish a mechanism for ongoing community engagement throughout the implementation phase, and seek feedback at various stages to ensure that the improvements align with the evolving needs and preferences of the residents.
- It is recognised that NPF4s six overarching spatial principles acknowledge local living and improving community health with an ageing population, whilst also placing importance on biodiversity and the climate crises. Subsequently, where possible we advise on buildings being reused and made fit for purpose and the importance of quality infrastructure cannot be highlighted enough. By conducting a thorough review using community input as a guide, Newtongrange can identify opportunities to enhance its free/affordable facilities and services, ensuring they better serve the diverse and evolving needs of its residents in challenging economic times.

Care and Maintenance

The recent data suggests that the care and maintenance of Newtongrange are areas for development, as this theme scored 4/7. Improving care and maintenance is crucial for enhancing the surroundings and achieving the 20-Minute Neighbourhood (<https://www.ourplace.scot/about-place/themes/20-minute-neighbourhoods-home/20-minute-neighbourhoods>). A focus should be placed on –

Roads and Paths:

- Prioritise improvements and repairs to roads and paths, especially in the context of new housing developments.
- Comprehensive review and upgrade of the existing infrastructure to ensure it meets modern standards and can support increased housing demands. Residents are particularly interested in seeing historical routes kept up to date, for example, Lady Road and Crawlees Road need attention to allow further generations to benefit.

A7 Pavement Review:

- Collaborate with the community to gather input on desired changes to the A7 pavements.
- Work with urban designers to make the pavements more attractive and accessible, considering the needs of all residents, including those with mobility challenges.

Business Planning Applications and Compliance:

- Ensure that planning applications submitted by businesses align with the village's character and are in harmony with the community's vision.
- Establish clear guidelines and expectations for businesses, and rigorously enforce compliance with these standards to maintain the village's integrity.

Youth Engagement for Community Improvement:

- Develop and promote programmes that engage young individuals in community improvement initiatives.
- Encourage their involvement in activities such as beautification projects, environmental campaigns, or youth-led initiatives that positively impact the community.

20-Minute Neighbourhood Goals:

- Align efforts with the 20-Minute Neighbourhood concept, focusing on creating neighbourhoods where residents can easily access essential services, amenities, and green spaces.

By highlighting these recommendations and working collaboratively with the community, local authorities, businesses, and youth, Newtongrange can make substantial progress in enhancing care and maintenance efforts, fostering a more vibrant, cohesive, and sustainable community that aligns with the 20-Minute Neighbourhood concept and fulfils the aspirations of its residents.

Traffic and Parking

Traffic and parking is a serious concern in Newtongrange which requires immediate attention and strategic planning. The recent study rated this 4/7 and knowing the issues and safety hazards some residents face we feel this topic needs addressing. Traffic around Newtongrange Primary School during pick-up and drop-off times is a significant concern raised by residents and highlighted in recent studies. Crawlees Road is also a safety issue with an increasing amount of traffic on a road which doesn't meet safety legislation. Finally, the volume of cars parked on narrow streets is another issue.

To address these concerns, the following steps and considerations could be taken-

Traffic Management around Newtongrange Primary School:

- Develop and implement a comprehensive traffic management plan specifically for pick-up and drop-off times at Newtongrange Primary School. We are aware designated drop-off/pick-up zones and traffic wardens have recently been used but we feel this should go further to alleviate congestion and enhance safety for pedestrians and vehicles.

Safety Measures for Crawlees Road:

- Conduct a thorough assessment of Crawlees Road to address safety issues caused by increasing traffic, especially as it doesn't meet safety legislation.
- Implement traffic calming measures, such as speed restrictions, traffic islands, or narrower road sections, to discourage high-speed traffic and enhance safety.
- Midlothian Council to consider reconfiguring the Crawlees road layout. Specifically, the suggestion is to utilise the safeguarded road as the primary route for residential traffic, turning the existing industrial estate into a cul-de-sac for the benefit of businesses.

Parking Solutions for Narrow Streets:

- Explore parking solutions for narrow streets to alleviate congestion caused by excessive parked cars. For example, residents should be encouraged to use driveways at the rear of premises and/or a free permit system could be considered.

Reconfiguration of Roads and Traffic Flow:

- Collaborate with relevant authorities to reassess the traffic routes, especially regarding the proposed Lingerwood residential development.
- Discuss the realignment of Crawlees Road, to ensure safe and efficient traffic flow for both residential and industrial traffic flow options.
- Assess the double roundabout and consider alternatives.

Engagement with Developers and Council:

- Facilitate discussions between the developer, Midlothian Council, and other stakeholders to find viable solutions for road realignment and traffic management.
- Explore possibilities of using safeguarded road corridors and negotiate land use agreements to support safer traffic routes.

We note that roads and parking are given consideration within the MLDP 2017 (https://www.midlothian.gov.uk/downloads/download/885/midlothian_local_develop)

ment_plan) and we hope to see this continue within further policies. It's imperative that policies are acted upon given the continuing development and ever-growing population of the village. By actively addressing these concerns through a combination of traffic management strategies, safety measures, and collaborative efforts with relevant stakeholders, Newtongrange can work towards creating a safer and more efficient traffic environment for its residents, schools, businesses, and upcoming residential developments.

Work and Economy

In recent data this theme scored 4/7 and we recognise there is opportunity for Newtongrange to develop in this area. There are good volunteering options with established groups that are committed to supporting the community. However, they could be supported to grow.

Volunteer Development:

- Identify specific areas where volunteers are needed and establish training programmes to equip them with the necessary skills.
- Collaborate with local educational institutions or community organisations to provide workshops for volunteers.
- Implement recognition programmes to appreciate and motivate volunteers, fostering a sense of community.

Supporting People with Disabilities:

- Conduct an accessibility audit of existing facilities and work towards making them more inclusive.
- Partner with disability support organisations to provide training and resources for groups to accommodate individuals with disabilities.
- Create awareness campaigns to encourage inclusivity and eliminate stigmas related to disabilities.

Third-Sector Partnerships:

- Identify potential third-sector partners that align with the community's goals and values.
- Organise networking events or forums to connect local groups with potential partners.
- Provide incentives or benefits for third-sector organizations to establish a presence in Newtongrange.

Mining Museum Utilisation:

- Collaborate with the Mining Museum to develop programmes and events that showcase the heritage of the village.
- Encourage local groups to use the museum facilities for meetings, workshops, or events.

Class Development and Promotion:

- Evaluate existing classes and identify areas for improvement or expansion.
- Utilise a variety of communication channels (social media, local newspapers, community bulletin boards) to promote classes and events.
- Seek feedback from the community to understand their interests and tailor classes accordingly.

Grant Funding and Resource Allocation:

- Explore grant opportunities to secure funding for community development initiatives.
- Allocate resources strategically to support key projects and programmes identified through community engagement.

Through the Single Midlothian Plan, Midlothian looks to attract business and, in the process, upskill people and provide access to fair work. This would be highly beneficial to Newtongrange residents who work and spend their earnings out-with the county.

Any developments should remember to involve the community in the decision-making process and adapt strategies based on their feedback and evolving needs. Collaboration and inclusivity are key to the success of community development initiatives.

Public Transport

This topic gained the most comments from residents and scored 4.2/7 in the Place Standard Tool Survey. Whilst Newtongrange has a bus and train service the service needs to be developed to serve the whole village. A full review of the transport system would be beneficial and we understand Stantec are undergoing this process. Newtongrange Community Council have emailed an extensive list of community comments (evidenced within the Place Standard Tool Survey) to Stantec for their consideration. We note that transport is clearly identified and forms part of the MLDP 2017 and we hope this is developed further with housing developers contributing to the infrastructure. Overarching themes for public transport include –

Comprehensive Community Feedback:

- Continue encouraging residents to provide feedback and suggestions on transportation issues.

Collaboration with Stantec:

- Maintain open communication with Stantec throughout the review process.
- Offer to participate in discussions or meetings to provide first-hand community perspectives on transportation challenges and potential solutions.
- Work with Stantec to create detailed maps which highlight traffic hotspots, areas with parking challenges, and locations where public transportation services may be lacking.
- Analyse commuting patterns and identify key routes that require improvement.

Multi-Modal Transportation Planning:

- Advocate for a multi-modal transportation approach which considers not only buses and trains, but also integrates cycling and pedestrian infrastructure, as paths and cycle paths are a serious concern or non-existent for part of the village.
- Identify areas where bike lanes or pedestrian-friendly zones can enhance connectivity.

Accessibility and Inclusivity:

- Ensure that the transportation system is accessible to everyone, including individuals with disabilities and the elderly. Highlight specific areas where accessibility improvements are needed and suggest solutions.

Public Awareness Campaigns:

- Launch public awareness campaigns to inform residents about the ongoing transportation review and encourage their continued involvement and use various communication channels to reach a broad audience.

Environmental Considerations:

- Emphasise the environmental benefits of a well-planned and efficient public transportation system.
- Advocate for initiatives that reduce the carbon footprint, such as the use of electric buses or the promotion of carpooling.

Funding:

- We understand outcomes cannot be the responsibility of one company and so exploring partnerships with governmental agencies or private organizations to enhance transportation infrastructure is important.

Regular Updates to the Community:

- Keep residents informed about the progress of the transportation review and any proposed changes. Share updates on how community feedback has influenced the decision-making process.

It's positive to see that residents are actively engaging with the issue of transportation, and the fact that the topic has garnered significant comments reflects its importance to the community. The current review by Stantec provides an opportunity for meaningful improvements. By actively participating in the transportation review process, Newtongrange residents and the Community Council contribute significantly to creating a more inclusive, efficient, and community-driven transportation system.

Streets and Spaces

Streets and spaces are important to the community and can impact wellbeing and give residents a sense of pride in their environment. This theme scored 4.2/7 in the recent data analysis. It's clear that there are various concerns and improvement opportunities in Newtongrange which still need attention after months of investigation with no real outcome.

Derelict Buildings and Antisocial Behaviour:

- Work with local authorities to identify and prioritise the redevelopment or renovation of derelict buildings.
- Continue to collaborate with police to address and mitigate antisocial behaviour in these areas.

Excessive Bins and Obstructions:

- Implement and enforce regulations regarding the placement and size of bins to prevent obstruction on pavements. Raising awareness in the community about responsible practices would be beneficial.

Inspections and Enforcement:

- Increase the frequency of inspections in local gardens and lanes to identify and address issues of waste dumping.
- Collaborate with residents and community groups to promote a sense of responsibility for maintaining the cleanliness of shared spaces, while promoting positive activities such as the Newtongrange Gardening Competition.

Tennis Courts and Park Buildings:

- Develop a plan to improve and maintain the tennis courts and park buildings.
- Explore potential partnerships with local sports clubs or organisations to support the enhancement of recreational facilities.

Repair Seating Areas and Benches:

- Conduct a thorough assessment of existing seating areas and benches to identify those in need of repair. Allocation of resources for the maintenance and improvement of public seating spaces should be earmarked.

Dropped Kerbs Design:

- Work with urban planners and engineers to review and redesign dropped kerbs at street junctions to enhance accessibility for pedestrians, including those with mobility devices.

Collaboration with Midlothian Council:

- Engage in discussions with Midlothian Council to integrate local initiatives with the maintenance and improvement of green spaces.
- Explore opportunities to add wildflowers to weeded areas, enhancing the visual appeal and biodiversity of public spaces.

Tennis Pavilion Improvement:

- Assess the current state of the pavilion and develop a plan for its improvement and seek funding or partnerships to support the refurbishment of the pavilion.

Primary School Refurbishment Plan:

- Collaborate with the school board, parents, and the community to develop a refurbishment plan for the primary school. Advocate for necessary funding or grants to address any emerging issues.

Street Cleaning:

- Co-ordinate with local authorities to ensure regular and effective street cleaning, including the use of road-sweepers.
- Educate residents about proper waste disposal to reduce littering and fly-tipping on the streets.

Regular communication with residents, community involvement, and collaboration with local authorities and relevant organisations will be crucial in addressing these concerns and fostering positive changes in Newtongrange.

Housing and Community

Housing and Community are key to a prosperous community. Newtongrange has been heavily developed in recent years which has increased the population and subsequently the pressure on services. We understand from NPF4 that Midlothian's minimum all-tenure housing land requirement is to find space for 8850 homes. Further development in Newtongrange would only increase infrastructure issues and we propose no further housing development in the village. This theme scored 4.4/7 in recent data and is a topic that needs highlighting further as many residents will only become aware of issues when planning has already been agreed making it too late to change outcomes. It's evident that housing and community development are critical aspects for the prosperity of Newtongrange especially with the pending Lingerwood development.

To address the concerns raised, we'd like to highlight the following:

Diversification of Housing Types:

- Advocate for a mix of housing types, including smaller and more affordable homes suitable for individuals, couples, or smaller families.
- Work with local authorities to establish guidelines that encourage diversity in housing options to meet the needs of a varied population.

Limiting Large Developments:

- Collaborate with planning authorities to impose restrictions on the construction of large 4+ bed houses by private developers.

- Encourage the development of smaller, more sustainable housing projects that align with the community's needs and character.

Infrastructure Focus:

- Prioritise infrastructure development to support the increased population, including roads, schools, healthcare facilities, and recreational spaces.
- Advocate for concurrent infrastructure improvements alongside housing developments to prevent overburdening existing services.

Solar Energy Integration:

- Promote the integration of solar energy in new housing developments and advocate for the implementation of solar panels on new and existing buildings to reduce the community's carbon footprint and energy costs.

Community Consultation for Masterplan:

- Encourage discussions on energy-efficient building designs that preserve the village's character and meet the needs of its residents.
- Work with heritage organisations and local authorities to preserve the original character of the village.
- Implement zoning regulations or guidelines that protect historical buildings and landmarks.
- Continue to work in collaboration with the Council to develop the Pool site.

Assessment of Plumbing and Drainage System:

- Conduct a thorough assessment of the Victorian plumbing system to understand its current state and potential vulnerabilities.
- Collaborate with experts to develop strategies to address critical issues and prevent flood damage to existing buildings and green spaces in Welfare Park.

Sustainable Development Principles:

- Advocate for the incorporation of sustainable development principles in the planning and construction of new housing projects.
- Explore eco-friendly building materials and construction practices that align with environmental and energy efficiency goals.

Partnership with Developers:

- Collaborate with housing developers to encourage adherence to sustainable and energy-efficient building practices.
- Explore incentive programmes or partnerships that reward developers for incorporating green technologies.

By actively engaging with the community, local authorities, and developers, Newtongrange can work towards a more sustainable and balanced approach to housing and community development. This will help ensure that the growth of the village aligns with the community's values and needs.

Feeling Safe

Community safety is paramount, and addressing concerns raised in the survey is crucial for fostering a secure and supportive environment in Newtongrange. Newtongrange experienced a fatality following the community survey. While this was highlighted as an isolated and unfortunate event it may be that the score of 4.5/7 would be lower if people were surveyed again. Key issues to be addressed include –

Dog Control Measures:

- Implement and enforce regulations requiring dogs to be kept on leads in residential public spaces.
- Increase awareness campaigns about responsible pet ownership, including the importance of leash control.

Youth Workers and Community Support Officers:

- Collaborate with local authorities to increase the presence of youth workers and community support officers, especially in areas prone to anti-social behaviour.
- Establish community outreach programmes to engage with young people and address underlying issues contributing to anti-social behaviour.

Proactive Police Measures:

- Continue to work closely with the police to enhance proactive measures aimed at reducing break-ins.
- Provide training and resources to residents interested in participating in such programmes.
- Establish community-police partnerships to improve communication and cooperation in addressing specific safety concerns.

Improved Street Lighting:

- Increase lighting in vennels and other areas known for anti-social or criminal activity to enhance overall safety.

Designated Bins for Dog Litter:

- Install more designated bins for dog litter in public spaces. Educate the community on the importance of using these bins and discourage the practice of leaving dog litter bags in public areas.

CCTV Installation:

- Consider the installation of CCTV cameras in strategic locations to monitor and deter criminal activities. Ensure that any surveillance initiatives adhere to privacy regulations and community consent.

Continuously monitoring and responding to community safety concerns, along with proactive collaboration between residents, law enforcement, and local authorities, will contribute to a safer and more secure Newtongrange. Regular updates and community involvement will help maintain a sense of shared responsibility for community safety and we hope to see the 'Midlothian Will be Safer' section of the Single Midlothian Plan come to life.

Moving Around

How residents move around in Newtongrange is important and this theme scored 4.5/7. Improving transportation and ensuring safe and accessible mobility in Newtongrange is essential for the well-being and convenience of the community. Key issues include –

Better Cycle Routes:

- Develop and enhance cycle routes connecting Newtongrange to Eskbank, Dalkeith, Edinburgh, Gorebridge, Bonnyrigg, and East Lothian.
- Explore opportunities to repurpose the old mineral railway line for a dedicated cycling path.

Zebra Crossings and Speed Limit:

- Install zebra crossings at key locations such as Bryans Road and the Sun Inn for pedestrian safety.

- Advocate for a reduced speed limit of 20 MPH in the village to enhance overall safety.

Pavement Review, Especially Under Viaduct and 1st to 10th Street:

- Conduct a comprehensive review of pavements, focusing on areas under the viaduct and between 1st to 10th Street.
- Address any issues related to maintenance, accessibility, and safety.

A7 Crossings and Footpath to Dalhousie Castle:

- Address safety concerns regarding A7 crossings, ensuring they are well-maintained and accessible. Improve footpaths along Cockpen Road leading to Dalhousie Castle to enhance connectivity for pedestrians.

Truck Restrictions and Roundabout Design:

- Advocate for restrictions on larger trucks passing through the village to reduce congestion and enhance safety.
- Collaborate with traffic planners to design a safer and more efficient junction at the double roundabout.

A7 Pathways Between Kings Gate and Newtongrange Main Street:

- Improve pathways between Kingsgate and Newtongrange Main Street to encourage pedestrian movement.
- Explore the feasibility of constructing a pedestrian bridge over the A7, connecting the old mineral railway walkway to enhance pedestrian safety.

Anti-Littering and Dog Fouling Signs:

- Install signs on lampposts to discourage littering and remind residents about responsible dog ownership.
- Implement awareness campaigns to educate the community about the importance of keeping public spaces clean.

Electric Scooter Safety:

- Collaborate with local authorities to address safety concerns related to electric scooters on pavements and consider implementing regulations.

Regular communication with local authorities, collaboration with transportation planners, and community engagement will be crucial in implementing these recommendations. Periodic reviews and adjustments based on feedback will help ensure that transportation and mobility solutions align with the evolving needs of Newtongrange residents.

Play and Recreation

Enhancing leisure facilities and public spaces is essential for the overall well-being and community engagement in Newtongrange. This theme scored 4.5/7 and comments for improvements include-

Public Toilets in the Park:

- Install public toilets in the park to meet the needs of visitors.

Refurbishment and Facility Improvements:

- Refurbish the playpark to include a wider range of facilities catering to different age groups.
- Upgrade the surface of the skate park and consider adding new features such as a pump track to enhance the experience.
- Introduce outdoor learning canopies for school use, providing additional educational and recreational opportunities.

- Encourage community engagement and gather input on desired improvements to leisure centre and library. A community hub must be seen as a priority for Newtongrange

Diverse Coffee and Eatery Options:

- Attract more coffee and eatery options within or near the park to create a vibrant social space. Consider collaborating with local businesses or entrepreneurs to bring in diverse food and beverage offerings.

Support Groups for Families:

- Support and promote support groups, including baby groups and young children's groups, which are easily accessible by public transport or within walking distance.
- Assess gaps in services
- Collaborate with local organisations and community leaders to provide resources and spaces for these groups.

Accessible Activities for Elderly and Disabled:

- Develop and promote accessible activities tailored to the needs of elderly and disabled individuals.
- Collaborate with disability support organisations to ensure inclusivity in community programmes and events.

Youth Group Building Maintenance:

- Prioritise the maintenance and improvement of buildings used by youth groups.
- Work with local authorities and community organisations to secure funding for necessary upgrades.

Promotion of Groups:

- Promote the availability of groups and activities within the community.
- Create a centralised platform or directory for residents to discover and join various adult groups and clubs.

Collaboration with Voluntary Groups:

- Foster collaboration with voluntary groups to enhance the overall community support network.
- Provide resources and support for these groups to organize and sustain activities that benefit the community.
- Regular communication with residents, collaboration with local businesses and organisations, and a commitment to ongoing maintenance and improvement will contribute to creating a vibrant and inclusive community in Newtongrange.

Identity and Belonging

Fostering a strong sense of identity and belonging in Newtongrange is essential for community well-being. Positively, this was one of the higher scoring themes in the recent survey with a score of 5/7. To address community comments we recommend –

Maintenance of Community Assets:

- Prioritise the maintenance and upkeep of community assets such as Gala Day, the Silver Band, and the Football Club.
- Allocate resources to address the issues with damaged railings, crumbling bricks at the miners statue, and broken bollards promptly.

Enhancement of Public Spaces:

- Invest in the improvement of public spaces, making them more attractive and welcoming.
- Address issues of litter and damaged street furniture to create an environment that residents and visitors want to explore.
- Implement and advertise regular cleaning schedules and initiatives to reduce litter and maintain a cleaner environment.

Diversification of Local Businesses:

- Encourage a diverse range of businesses to set up shop, avoiding excessive proliferation of certain types of establishments.
- Consider community preferences when approving new business licenses to maintain the village's character.

Addressing Economic Deprivation:

- Collaborate with local authorities and organizations to address economic deprivation in the village. Explore initiatives such as job training programmes or small business support to boost economic opportunities.

Improving Beyond Main Streets:

- Extend efforts beyond the main streets to improve and beautify the traditional parts of the village.

Balanced New Building Development:

- Carefully plan new building developments to avoid dilution of the traditional village character.
- Prioritise designs that integrate seamlessly with the existing architecture and contribute positively to the community.

Preservation of Friendliness:

- Maintain the friendly and welcoming atmosphere of the village.
- Encourage community events and activities that facilitate social interaction and strengthen the sense of belonging.

By addressing these recommendations, Newtongrange can continue to prioritise its heritage, enhance community assets, and create a thriving and inclusive environment for residents. Collaborative efforts between residents, local authorities, and businesses will be essential for the successful implementation of these initiatives

Natural Space

Newtongrange benefits from natural spaces and this theme scored the highest in the recent analysis. We want to maintain our green spaces and work towards green flag status in our park. Maintaining and enhancing natural spaces is crucial for the well-being of a community. Further suggestions include –

Safer Cycle Links:

- Improve and create safer cycle links to connect Newtongrange with Gore Glen and Roslin, encouraging more sustainable transportation.

Clubs for Kids:

- Utilise green spaces for organised clubs and activities for kids, promoting outdoor play and recreational opportunities.

Preservation of Fields:

- Advocate against building on fields to protect and preserve green spaces in the community.

- Collaborate with local authorities to establish and enforce protective zoning regulations.
- Address the eyesore at the site opposite the Masonic lodge building through community-led beautification projects or discussions with property owners.

Wildlife-Friendly Initiatives:

- Install bird boxes and beastie boxes in trees in the park to encourage wildlife habitats.
- Increase the number of litter bins in parks and public spaces to facilitate proper waste disposal.
- Conduct community education programmes on the value of trees, the consequences of artificial turf, and the importance of green spaces.

Litter Collection and Cleanliness:

- Improve litter collection efforts, including organizing community clean-up events.
- Address specific areas of concern, such as the woods heading up to Newbattle High School, with focused litter-picking initiatives.

Development of Pavilion and Bowling Complex:

- Explore the development of the pavilion and old bowling complex into a community tea/coffee room or multi-use space. Seek funding or partnerships to support the renovation and repurposing of these facilities.

Additional Seating and Picnic Areas:

- Increase the number of seating and picnic areas in the park to enhance community enjoyment and social interaction.
- Install more benches in Lady Victoria Grange and Orchard Grange to provide resting spots and enhance community spaces

Utilise Football Building:

- Explore opportunities to make use of the football building for community events, clubs, or activities.

Accessible Walks:

- Create accessible country or riverside walks for those with limited mobility.
- Ensure that these walks are well-maintained and clearly marked for easy navigation.

Preservation of Green Spaces:

- Advocate against large housing developments on farmland to preserve local green spaces.
- Collaborate with local planning authorities to balance housing needs with environmental conservation.

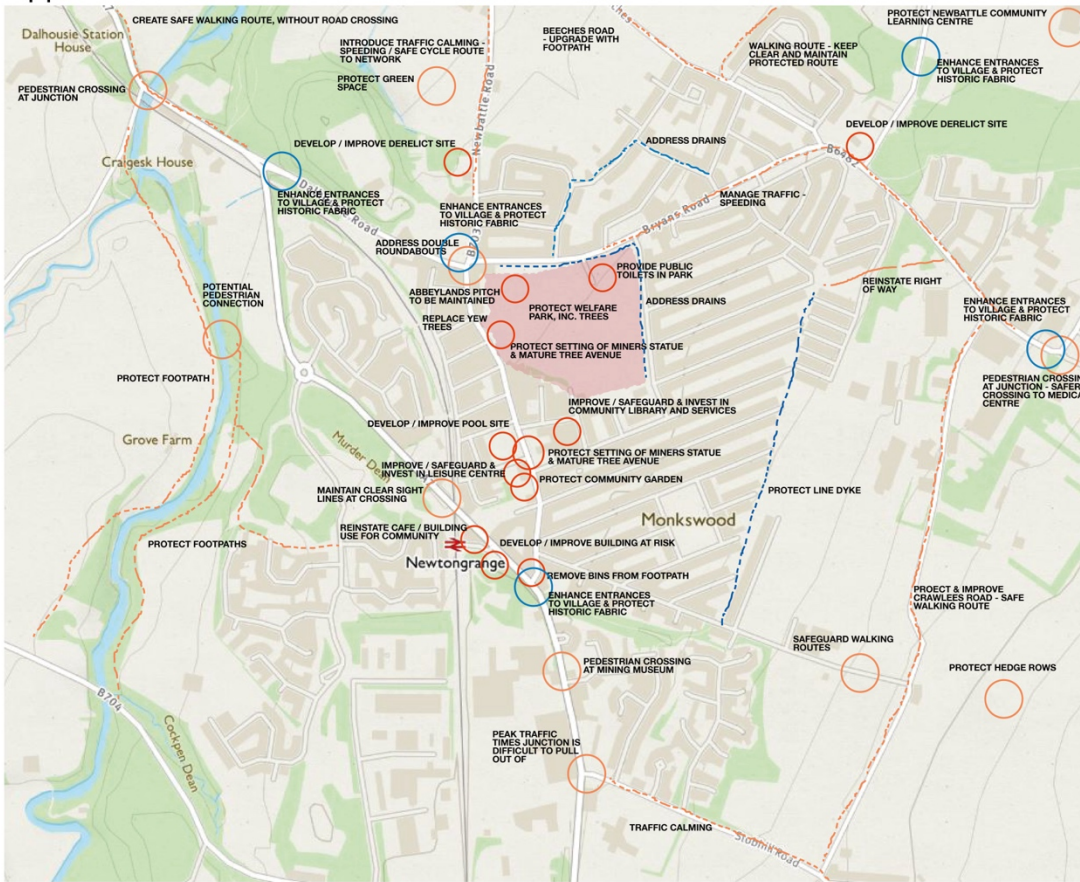
Wildflower Meadows and Community Gardens:

- Introduce patches of wildflower meadows in the Welfare Park to enhance biodiversity and add colour.
- Increase the availability of community gardens and allotments for residents interested in gardening.

By addressing these recommendations, Newtongrange can continue to cherish and develop its natural spaces, fostering a strong sense of community and well-being. Collaborative efforts involving residents, local authorities, and community groups will be essential for successful implementation.

Proposals / Map

Opportunities and Priorities



Newtongrange Local Place Plan
Map of Proposals



The above map has been drafted in consultation with the community.

Some of the information contained within the map is described below;

- Highlight specific Community focussed buildings and services that should be protected / enhanced.
- Note key sites within the village that may be developed to further strengthen the services we have access to / provide affordable housing within the village.
- Key walking routes that should be protected / enhanced.
- Road issues and opportunities.
- Heritage areas that should be protected / enhanced.
- Generally, consultation has highlighted a requirement for more affordable housing.
- Protection of green space, in particular Welfare Park.
- A map to identify sites of specific proposals, land or buildings.

APPENDICES

Timetable		
Date	Target	Outcome
1 st June – 15 th September	Organise and distribute the survey	Link in with community groups and businesses to collaboratively gain community reviews.
1 st July – 13 th August	Start the draft LPP	Review Midlothian Council suggested LPP documents and Dumfries and Galloway LPP
14 th August	Circulate draft LPP document to Community Council Members	Gain comments and update the LPP
29 th August	Present draft doc to Community Council	Gain further comments and guidance
16 th September – 25 th September	Collate survey results and analyse data	Produce SMART targets based on results
26 th September	Present findings to Community Council	Gain comments and update the LPP
27 th September – 13 th October	Work on draft LLP document	Circulate to Community Council Members for review and update with their comments
31 st October – 3 rd November	Present draft LPP to Community Council in preparation for submitting	Work on final submission
		Send to planning team to gain their view
4 th November – 31 st December	Discuss LPP at AGM	Outline what still needs to be done
	Meet with Midlothian Council Planners to discuss LPP	
23 rd January	At CC meeting map out key areas of interest for the LPP	Add map to LPP
1 st Feb – 14 th February	Meet with planners and add final recommendations. Organise proof readers	Aim to submit LPP for consultation 16 th Feb

Pre-submission Notice
Friday 16th February

Dear local Councillors, adjoining Community Councils and local partners,

I am contacting you on behalf of Newtongrange Community Council in relation to our Local Place Plan. We have been working on a Local Place Plan for our Community Council boundary area and began community engagement in June 2023. We used the results from the Place Standard Tool and previous research to develop the Plan. We have now prepared a draft Local Place Plan. It has been published for public consultation here and printed copies are available to view at Newtongrange Library. We are obliged to send the plan to you to comply with Section 4 of the Town and Country Planning (Local Place Plans) (Scotland) Regulations 2021.

The purpose of the Local Place Plan is to outline a comprehensive strategy which reflects the collective aspirations, needs, and priorities of the Newtongrange community. This plan serves as a guiding document which articulates the vision for the area's development and improvement over a defined period.

If you have any comments on the Plan, please send them to secretary@newtongrange.org. The deadline for comments is 16th March 2024, to allow time to take comments into consideration prior to submission to Midlothian Council by 31st March 2024.

Kind regards,
Sarah Matthews
Secretary Newtongrange Community Council

Notice was published and sent to –

www.newtongrange.org
enquiries@mayfieldandeasthouses.cc
secretary@eskbanknewbattlecc.org
secretary@moorfoot.org.uk
pat.bowie32@gmail.com

gorebridgecommunitycouncil@gmail.com
douglas.bowden@midlothian.gov.uk
Kelly.Drummond@midlothian.gov.uk
Ellen.Scott@midlothian.gov.uk

DRAFT